



Liberia IDSR Epidemiology Bulletin

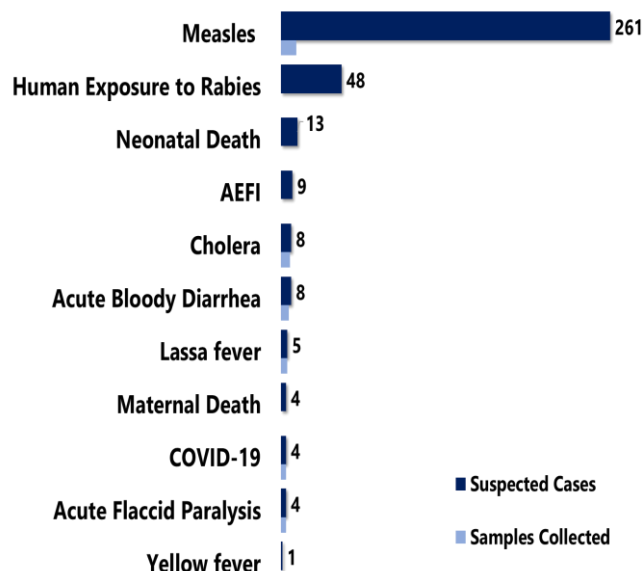
Epi-week 25 (June 20-26, 2022)

Country Population: 5,104,413 | Volume 14 Issue 25 | June 20-26, 2022

Data Source: CSOs from 15 Counties and Laboratory

Highlights

Figure 1: Public Health Events Reported during this week



Keynotes and Events of Public Health Significance

- ♦ A total of **365 events** of public health importance including **19 deaths** were reported
- ♦ **Completeness and timeliness** of health facility reports were both **99% and 96%**
- ♦ **Ongoing Lassa fever** outbreak in two counties
- ♦ **Ongoing Measles** outbreak in fourteen counties
- ♦ **Four (4) new confirmed COVID-19** cases reported from Montserrado and Margibi Counties

*Adverse Events Following Immunization /Adverse Drug Reaction

Reporting Coverage

Table 1: Health Facility Weekly IDSR Reporting Coverage, Liberia, Epi Week 25, 2022

County	Expected from HF*	Reports Received	Received on Time	Completeness (%)	Timeliness (%)
Bomi	26	26	26	100	100
Bong	57	57	57	100	100
Gbarpolu	15	15	8	100	53
Grand Bassa	36	36	36	100	100
Grand Cape Mount	34	34	34	100	100
Grand Gedeh	24	24	24	100	100
Grand Kru	19	19	19	100	100
Lofa	61	61	61	100	100
Margibi	55	55	55	100	100
Maryland	27	27	27	100	100
Montserrado	326	326	326	100	100
Nimba	93	85	85	91	91
Rivercess	20	20	20	100	100
River Gee	20	20	20	100	100
Sinoe	37	37	37	100	100
Liberia	850	842	835	99	96

842 (99%)
Health facilities reported IDSR data

93 (100%)
Health districts reported IDSR data

835 (96%)
Health facilities reported timely IDSR data

- ♦ The national target for weekly IDSR reporting is 80%. Health facility timeliness is monitored at health district level
- ♦ All counties submitted weekly IDSR reports to the national level on times.

Legend:



Vaccine Preventable Diseases

Measles

Two hundred sixty-one (261) suspected cases and one death reported: Montserrado (175), Grand Bassa (27), Nimba (15 including 1 death), Sinoe (12), Grand Cape Mount (9), Margibi (8), Lofa (4), Grand Gedeh (3), Rivercess (2), Maryland (2), Bomi (2), Bong (1) and Gbarpolu (1) Counties

Twelve (12) specimens collected pending testing

Vaccination status among suspected cases

- Vaccinated: (100) 38%
- Not vaccinated: (144) 55%
- Unknown: (17) 7%

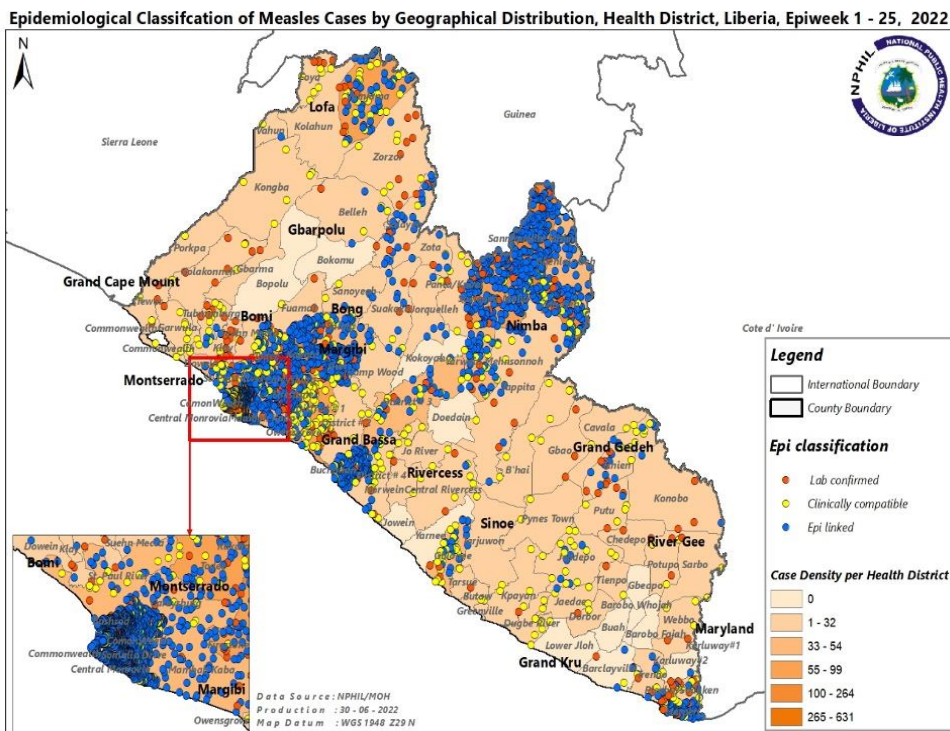
Age distribution among suspected cases

- < 5 years: (163) 62%
- ≥5 years: (98) 38%

Cumulatively four thousand nine hundred fifty-six (4,956) suspected cases have been reported including 66 deaths

- (4,591) 93% confirmed including 18 Rubella cases:
 - ✓ Laboratory confirmed: (327) 7%
 - ✓ Clinically compatible: (563) 12%
 - ✓ Epidemiologically linked: (3,701) 81%

- Non-measles discarded: 365
- Rejected samples: 17
- Proportion of samples collected: (767/4,956) 15%
- Proportion of samples tested: (733/767) 96%



Outbreak

Measles: (Situation update as of the 13th December 2021-26th June, 2022)

Montserrado County: Commonwealth, Bushrod, Somalia Drive, St. Paul, Central Monrovia, Todee and Careysburg Districts

One hundred seventy-five (175) new cases reported from Bushrod (76), Somalia Drive (29), Commonwealth (21) St. Paul (16), Central Monrovia (15), Todee (10) and Careysburg (8) Districts

A total of 2,682 cases have been confirmed

- Median age 5 (1month-59years)
- CFR (40/2,682) 1.5%
- Vaccinated - (1,281/2,682) 47.8%



Liberia IDSR Epidemiology Bulletin

Epi-week 25 (June 20-26, 2022)

- Unknown - (25/2.682) 0.9%

Bong County: Suakoko, Zota, Jorquelleh, Salala, and Panta Districts (Situation update as of 20th December 2021- 26th June, 2022)

- 📁 One (1) new case reported from Salala District
- 📁 A total of 160 cases have been confirmed including two (2) deaths
 - Median age 8 (9 months - 35 years)
 - CFR (2/160) 1.3%

Lofa County: Voinjama, Foyah, Zorzor and Salala Districts (Situation update as of 21st January – 26th June, 2022)

- 📁 Four (4) new cases reported from Foya (2), Voinjama (1), and Zorzor (1) Districts
- 📁 A total of 136 cases have been confirmed
 - Median age: 10 (2 months-46years)
 - Vaccinated: (131/136) 96%
 - Unknown: (3/136) 2%

Nimba County: Saclepea-Mah, Zoe-Geh, Tappita, Yarwin Mehnsonnoh, and Sanniquellie-Mah Districts (Situation update as of 20th January-26th June, 2022)

- 📁 Fifteen (15) new cases reported from Sanniquellie-Mah (5), Yarwin Mehnsonnoh (5), Tappita (2), Zoe-Geh (2), and Saclepea-Mah (1) Districts
- 📁 A total of five hundred twenty-nine (529) cases have been confirmed
 - Median age 7 (2 months- 48years)
 - Vaccinated : (15/529) 3%
 - Unknown: (15/529) 3%

Maryland County: Harper and Pleebo Districts (Situation update as of 1st February- 26th June, 2022)

- 📁 Two (2) new cases reported from Harper District
- 📁 A total of 112 cases have been confirmed
 - Median age 7 (7 months-48 years)
 - Vaccinated: (14/112) 13%
 - Unknown: (66/112) 59%

Grand Bassa County: District #1, District#2, District #3A&B, District #4, Owensgrove, and Buchanan Districts (Situation update as of 22nd April- 26th June, 2022)

- 📁 Twenty-five (25) new cases reported from Buchanan (16), District #1 (7), and District #4 (2) Districts
- 📁 A total of 315 cases including one death have been confirmed
 - Median age 8 (1 month-45 years)
 - Vaccinated: (121/315) 38%
 - Unknown: (61/315) 19%
 - CFR (1/315) 0.3%

Bomi County: Suehn Mecca, Senjeh, Dowein and Klay Districts (Situation update as of 7th March- 26th June, 2022)

- 📁 Two (2) new case recorded from Suehn Mecca District
- 📁 A total of 52 cases have been confirmed including 3 deaths
 - Median age 7 (1 month-48 years)
 - Vaccinated: (23/52) 44%
 - Unknown: (35/52) 67%
 - CFR (3/52) 5.8%

Grand Kru: Trehn District (Situation update as of 14th March – 26th June, 2022)

- 📁 No new case reported



Liberia IDSR Epidemiology Bulletin

Epi-week 25 (June 20-26, 2022)

- 👉 A total of 10 cases confirmed
 - Median age 3 (5 months- 9 years)
 - Vaccinated: (7/10) 70%
 - Unknown: 0

Rivercess: Central C and Jo- River Districts (Situation update as of 16 March – 26th June, 2022)

- 👉 Two (2) new cases reported from Central C District
- 👉 A total 16 clinically confirmed cases have been recorded
- 👉 Median age 3 (6 months -36 years)
- 👉 Vaccinated: (6/16) 38%
- 👉 Unknown: (6/16) 38%

Margibi County: Firestone, Kakata and Mamba Kaba Districts (Situation update as of 28 February–26th June, 2022)

- 👉 Eleven (11) new cases reported from Kakata (5), Firestone (3), Mamba Kaba (2), and Gibi (1) Districts
- 👉 A total of 301 cases confirmed
- 👉 Median age 6 (4 months - 67 years)
- 👉 Vaccinated: (226/301) 75%
- 👉 Unknown: (74/301) 25%

Grand Cape Mount County: Commonwealth District (Situation update as of 10 March – 26th June, 2022)

- 👉 Eight (8) new cases reported from Gola Konneh (7) and Garwula (1) Districts
- 👉 A total of 54 cases have been confirmed
- 👉 Median age 12 (5 months – 32 years)
- 👉 Vaccinated: (48/52) 92%
- 👉 Unknown (1/52) 2%

Grand Gedeh County: Tchien District (Situation update as of 10th March – 26th June, 2022)

- 👉 One (1) new case reported from Tchien District
- 👉 A total of 39 cases have been confirmed
 - Median age 6 (6 month-20 years)
 - Vaccinated (19/39) 49%
 - Unknown: (8/39) 21%

Gbarpolu: Belle and Kongba Districts (Situation update as of 22nd February- 26th June, 2022)

- 👉 No new case reported
- 👉 A total of 13 cases have been confirmed
 - Median age 17 (6 months -22 year)
 - Vaccinated: (4/13) 31%
 - Unknown: (3/13) 23%

Sinoe: Gblonee and Jedepo Districts (Situation update as of 19th May -26th June, 2022)

- 👉 Eight (8) new cases reported from Jedepo District
- 👉 A total of 71 cases have been confirmed
 - Median age (2 months -38 years)
 - Vaccinated: (38/71) 54%
 - Unknown (19/71) 27%

Public Health Actions

- 👉 Continue case management and follow up with home-based cases (Maryland and Rivercess) Counties
- 👉 Airing of measles prevention and control messages on going (Rivercess, Bong, and Lofa) Counties



Liberia IDSR Epidemiology Bulletin

Epi-week 25 (June 20-26, 2022)

👉 Awareness and sensitization of family members ongoing in Grand Bassa County

Challenges

- Limited essential medications/ medical supplies for case management
- No support for response making it difficult to get information from field (Bong)
- Limited specimen collection kits for measles (Margibi)

Acute Flaccid Paralysis (AFP)

- 👉 Four (4) cases reported from Rivercess, Grand Bassa, Nimba, and Montserrado Counties
- 👉 Four (4) specimens collected
 - Two shipped
 - Two pending shipment
- 👉 Cumulatively, seventy (70) cases have been reported

Neonatal Tetanus

- 👉 Zero case reported
- 👉 Cumulatively, twenty-eight (28) clinically diagnosed cases reported

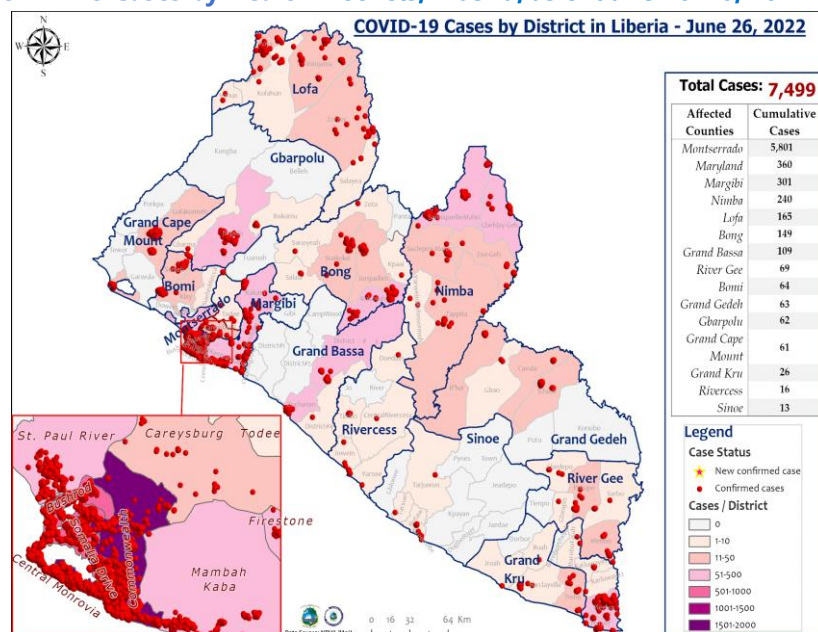
Influenza-Like Illnesses

Coronavirus Disease (COVID-19)

Outbreak

- 👉 Four (4) confirmed cases reported from Montserrado (3), and Margibi (1) Counties
- 👉 Thirty-five (37) active case were reported from Montserrado (35), and Margibi (2) Counties
- 👉 A total of six hundred four (604) confirmed cases have been reported since epi week 1
- 👉 Cumulatively, seven thousand four hundred ninety-nine (7,499) confirmed cases recorded including 294 deaths.
 - 412 healthcare workers (including 8 deaths) reported with 17,690 contacts generated

Figure 2: Geographical Distribution of Laboratory Confirmed COVID-19 Cases by Health Districts, Liberia, as of June 20-26, 2022



Public Health Actions

- 👉 Weekly IMS coordination meeting
 - On-going.
- 👉 Surveillance activities including active case search and case investigation on-going in affected county using WHO interim guidelines
- 👉 Case management ongoing for confirmed cases



Liberia IDSR Epidemiology Bulletin

Epi-week 25 (June 20-26, 2022)

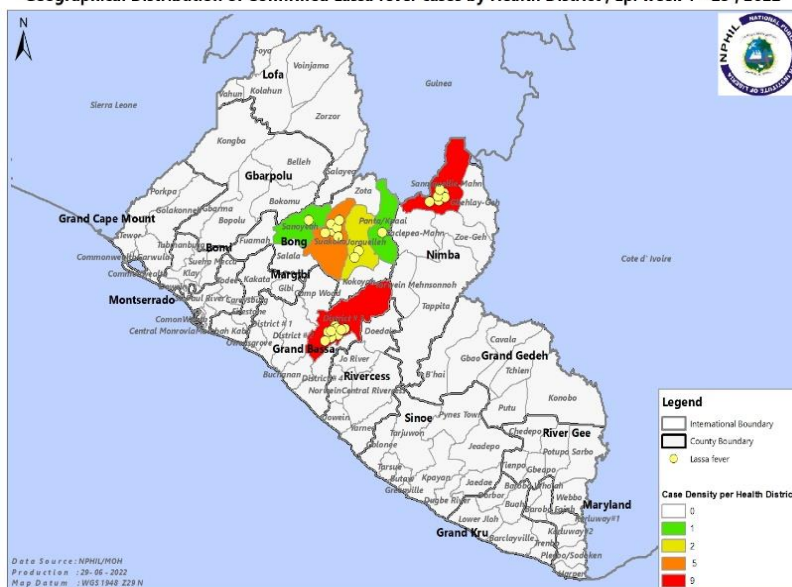
✍ Compulsory testing among outgoing travelers as required by country of destination ongoing

Viral Hemorrhagic Diseases

Lassa fever

- ✍ Five (5) suspected cases and one death reported: Grand Bassa (4 including 1 death), and Bong (1) counties
- ✍ Five (5) specimens collected and tested: 2 positive, 3 negative
- ✍ Cumulatively, eighty-one (81) suspected cases have been reported including 10 deaths
 - Twenty-nine (29) confirmed cases recorded including 8 deaths
 - CFR:(8/29) 28%
 - Proportion of suspected cases with sample collected (81/81) 100%
 - Proportion of suspected cases with sample tested (79/81) 98%
 - 2 samples rejected

Geographical Distribution of Confirmed Lassa fever cases by Health District, Epi week 1 - 25, 2022



Outbreak

Lassa fever disease: (sitrep update as of June 19, 2022)

- ✍ Two (2) new confirmed cases reported
- ✍ Twenty (20) contacts under follow up
- ✍ Cumulatively, twenty (29) laboratory-confirmed cases including 8 deaths reported

Grand Bassa County: District #3 A&B

- ✍ Two (2) new confirmed cases reported
- ✍ Cumulative cases: 11
 - CFR (2/11) 18%
- ✍ Cumulative contacts: 42
 - 12 contacts generated and under follow-up
 - 30 completed 21 days follow up

Public Health Measures

- ✍ Risk communication interventions
 - Ongoing community engagement
 - Encourage radio station (Radio Gorgelee) at LAC to air Lassa fever messages and jingles
- ✍ Surveillance
 - Active case search ongoing in the affected health district
 - Heighten surveillance in all districts



Liberia IDSR Epidemiology Bulletin

Epi-week 25 (June 20-26, 2022)

- Daily sitreps shared regularly to national level

Bong County: Suakoko District

- 📁 No new confirmed case recorded
- 📁 Cumulatively, eleven (11) confirmed cases including (2) deaths (CFR 18%)
 - Suakoko District: 7 cases and 2 deaths
 - Jorquelleh District: 2 cases
 - Sanoyea District: 1 case
 - Kpaai District: 1 case
- 📁 Total of one hundred forty-two (142) contacts generated
 - 131 completed 21 days follow up
 - 11 (9 HCWs, 2 family members) under follow up

Public Health Measures

- 📁 Risk communication interventions
 - Daily health talk in all health facilities on priority diseases
 - Airing of LF preventive and control messages
- 📁 Case management
 - Isolation of cases
 - Administration of ribavirin
- 📁 Surveillance
 - Active case search ongoing in the affected health district
 - Heighten surveillance in all districts
 - Daily situational reports are shared regularly to national level

Yellow fever

- 📁 One (1) suspected case reported from Grand Cape Mount County
- 📁 No specimen collected
- 📁 Cumulatively, forty-eight (48) suspected cases have been reported
 - Proportion of suspected cases with sample collected (42/48) 88%
 - Proportion of suspected cases with sample tested (41/48) 85%

Diarrheal Diseases

Acute Bloody Diarrhea (Suspected Shigellosis)

- 📁 Eight (8) suspected cases reported: Sinoe (3), Maryland (1), Gbarpolu (1), Lofa (1), Grand Kru (1), and Nimba (1) Counties
 - Six (6) specimens collected; pending testing
- 📁 Cumulatively, two hundred eighty (280) suspected cases reported
 - One hundred thirty-two (132) specimens collected; 109 received by the lab
 - 1 positive, 92 negative



Liberia IDSR Epidemiology Bulletin

Epi-week 25 (June 20-26, 2022)

- 11 rejected
- 5 specimens not tested (discarded)

Severe Acute Watery Diarrhea (Suspected Cholera)

📁 Eight (8) suspected cases reported: Sinoe (4), Lofa (1), Grand Bassa (1), Grand Kru (1), and Maryland (1) Counties

📁 Seven (7) specimens collected; 3 tested negative

📁 Cumulatively, one hundred ninety-eight (198) suspected cases reported

- 106 specimens collected; 62 received by the lab
- 51 tested negative
- 5 rejected
- 6 specimens not tested

Other Reportable Diseases

Animal bite (Human Exposure to Rabies)

📁 Forty-eight (48) animal bite cases were reported: Montserrado (15), Bong (8), Margibi (4), Grand Kru (3), Maryland (3), Grand Bassa (3), Nimba (3), Lofa (3), Grand Cape Mount (2), Sinoe (1), Bomi (1), Rivercess (1), and River Gee (1) Counties

- Five (5) persons (10%) received PEP

📁 Cumulatively, one thousand ninety (1,096) animal bite cases reported

- Dog bites account for 100%
- 1-4 doses (PEP) administered to about (177/1,096) 16% of patients

Public Health Actions

📁 Administration of post exposure prophylaxis

Meningitis

📁 Zero case reported

📁 Cumulatively, twenty-one (21) suspected cases reported

- One (1) confirmed

Monkey pox

📁 Zero suspected case reported

📁 Cumulatively, fifteen (15) suspected cases reported, one (1) specimen collected pending shipment

Events of Public Health Importance

Maternal Mortality

📁 Four (4) deaths reported: Montserrado (2), Grand Gedeh (1), and Bong (1) Counties

- Cause of death: Post-partum Hemorrhage Sepsis, Eclampsia, under review
- All deaths occurred at the health facility

📁 Cumulatively, one hundred sixty-six (166) deaths reported

- Proportion of deaths reviewed (43/166) 26%
- Proportion of community deaths (16/166) 10%



Liberia IDSR Epidemiology Bulletin

Epi-week 25 (June 20-26, 2022)

- Proportion of community deaths reviewed: (8/16) 50%

Neonatal Mortality

- Thirteen (13) deaths reported: Montserrado (6), Grand Kru (2), Nimba (2), Bong (2), and Maryland (1) counties
 - Causes of death: Birth asphyxia (9), Preterm (2), Sepsis (1), under review
 - All deaths occurred at the health facility
- Cumulatively, four hundred fifty-one (451) deaths have been reported
 - Proportion of deaths reviewed (55/451) 12%
 - Proportion of community deaths (14/451) 3%
 - Proportion of deaths reviewed from community (3/14) 21%

Adverse Events Following Immunization (AEFI)/Adverse Drug Reaction (ADR)

- Nine (9) cases reported: Grand Gedeh (3), Grand Cape Mount (2), Sinoe (2), and River Gee (2) Counties
 - Related vaccines:
 - COVID-(9)
- Cumulatively: Two hundred forty-three (243) events reported with 100% related to COVID-19
- Proportion of COVID-19 vaccine
 - J&J vaccine – (148/243) 61%
 - AstraZeneca – (6/243) 2.5%
 - Pfizer – (2/243) 0.8%
- Proportion of other vaccine related events – (87/243) 36%

Public Health Actions

- All events were investigated, categorized as *non-serious AEFI and symptomatically treated*
- Active case search and community engagement ongoing

Unexplained death

- Zero case reported

Border Surveillance Update

Table2: Border activity at the PoE for Incoming and Outgoing Travelers, Liberia, Epi week 25, 2022

A total of 4,389 travelers recorded for the week with incoming travelers accounting for 46% (2,015/4,389)

Type of Ports	Point of Entry	Weekly total	Arrival	Departure	Total travelers with YB	Yellow Book Damage	Card Replaced	Vaccinated against YF & Issued	Alerts detected/ Verified	COVID-19 Reactive	Evidence of COVID-19 vaccination card/certificate
Airport	James S. Paynes	65	40	25	65	0	0	0	0	0	5
	Robert Int'l Airport	2843	1183	1660	2831	7	0	5	0	0	2800
Seaport	Freeport of Monrovia	170	85	85	170	0	0	0	0	0	170
	Buchanan Port	140	70	70	140	0	0	0	0	0	140
Land Crossing	Bo Water Side	640	394	246	456	174	0	10	0	0	82
	Ganta	202	86	116	167	35	0	0	0	0	32
	Yekepa	149	69	80	138	11	0	0	0	0	17
	Loguatu	180	88	92	165	15	0	0	0	0	21
Total		4,389	2,015	2,374	4,132	242	0	15	0	0	3,267

Note: Yellow book issue for both arrival and departure; Vaccination coverage for both arrival and departure



Liberia IDSR Epidemiology Bulletin

Epi-week 25 (June 20-26, 2022)

Public Health Measures

National level

- 👉 Providing technical, logistical, and financial support to counties
 - Production and publication of situational reports
 - Data harmonization between MSF and NPHIL ongoing
 - Drafted fact sheets on Anthrax, Monkey pox, and Pertussis pending approval for distribution to counties
 - Drafted Monkey pox case definition, SOP, FAQ and national outbreak response guideline, and developed case-based forms for monkey pox awaiting stakeholders' inputs for approval
 - Piloted the updated RRT training package in Gbarpolu County with support from AFENET
 - Trained seventeen (17) personnel's under fourteen (14) core-functions
 - Teams are in the field rolling out the IDSR 3rd Edition training in Grand Kru, Maryland, and River Gee Counties supported by GIZ (Health Focus, PIH, and Samaritan's Purse)
- 👉 Operational Activity
 - Continued support for operational activities ongoing

County level

- 👉 **Surveillance**
 - Restrained and monitoring of domestic animal (Dog) and following up with people possibly exposed to rabies
 - Publication of situational reports
 - Active case search ongoing in affected and surrounding communities
- 👉 **Case Management**
 - Administration of PEP and ribavirin
 - Management of measles cases ongoing

Appendix

Summary of Immediately Reportable Diseases, Conditions, and Events by County

Counties			Bomi	Bong	Gbarpolu	Grand Bassa	Grand Cape Mount	Grand Gedeh	Grand Kru	Lofa	Margibi	Maryland	Montserrado	Nimba	Rivercess	River Gee	Sinoe	Total Weekly	Cumulative Reported	Cumulative Lab-confirmed	
No. of Expected Health District			4	9	5	8	5	6	5	6	4	6	7	6	6	6	10	93			
No. of Health District Reported			4	9	5	8	5	6	5	6	4	6	7	6	6	6	10	93			
Vaccine Preventable Diseases	Acute Flaccid Paralysis (Suspected Polio)	A	0	0	0	1	0	0	0	0	0	0	1	1	0	1	0	4	70	0	
		D	0	0	0	0	0	0	0	0	0	0	0	0	0	0	0	0	0	0	
	Measles	A	2	1	1	27	9	3	0	4	8	2	175	14	2	0	12	260	4890	328	
		D	0	0	0	0	0	0	0	0	0	0	0	1	0	0	0	1	66	0	
	Neonatal Tetanus	A	0	0	0	0	0	0	0	0	0	0	0	0	0	0	0	0	28	0	
		D	0	0	0	0	0	0	0	0	0	0	0	0	0	0	0	0	3	0	
	Yellow fever	A	0	0	0	0	1	0	0	0	0	0	0	0	0	0	0	0	1	48	0
		D	0	0	0	0	0	0	0	0	0	0	0	0	0	0	0	0	0	0	0
Viral Hemorrhagic Fever	Dengue fever	A	0	0	0	0	0	0	0	0	0	0	0	0	0	0	0	0	0	0	
		D	0	0	0	0	0	0	0	0	0	0	0	0	0	0	0	0	0	0	
	Ebola Virus Disease	A	0	0	0	0	0	0	0	0	0	0	0	0	0	0	0	0	0	0	
		D	0	0	0	0	0	0	0	0	0	0	0	0	0	0	0	0	0	0	
	Lassa fever	A	0	1	0	3	0	0	0	0	0	0	0	0	0	0	0	0	4	71	21
		D	0	0	0	1	0	0	0	0	0	0	0	0	0	0	0	0	1	10	8
Influenza-Like Illnesses	COVID-19	A	0	0	0	0	0	0	0	0	1	0	3	0	0	0	0	4	604	7498	
		D	0	0	0	0	0	0	0	0	0	0	0	0	0	0	0	0	0	294	
Diarrheal Diseases	Acute Bloody Diarrhoea (Shigellosis)	A	0	0	1	0	0	0	1	1	0	1	0	1	0	0	3	8	280	1	
		D	0	0	0	0	0	0	0	0	0	0	0	0	0	0	0	0	0	0	
	Severe Acute Watery Diarrhoea (Cholera)	A	0	0	0	1	0	0	1	1	0	1	0	0	0	0	4	8	198	0	
		D	0	0	0	0	0	0	0	0	0	0	0	0	0	0	0	0	0	0	
Events of Public Health Importance	Maternal Mortality	D	0	1	0	0	0	1	0	0	0	0	2	0	0	0	0	4	166		
	Neonatal Mortality	D	0	2	0	0	0	0	2	0	0	1	6	2	0	0	0	13	451		
	Adverse Events Following Immunization (AEFI)	A	0		0	0	2	3	0	0	0	0	0	0	0	2	2	9	243	0	
		D	0	0	0	0	0	0	0	0	0	0	0	0	0	0	0	0	1	0	
	Unexplained Cluster of Health Events/Disease	A	0	0	0	0	0	0	0	0	0	0	0	0	0	0	0	0	0	0	0
		D	0	0	0	0	0	0	0	0	0	0	0	0	0	0	0	0	0	0	0
Other Reportable Diseases	Monkeypox	A	0	0	0	0	0	0	0	0	0	0	0	0	0	0	0	0	15	0	
		D	0	0	0	0	0	0	0	0	0	0	0	0	0	0	0	0	0	0	
	Tuberculosis	A	0	0	0	0	0	0	0	0	0	0	0	0	0	0	0	0	0	0	
		D	0	0	0	0	0	0	0	0	0	0	0	0	0	0	0	0	0	0	
	Human Exposure to Rabies (Suspected Human Rabies)	A	1	8	0	3	2	0	3	3	4	3	15	3	1	1	1	48	1090	0	
		D	0	0	0	0	0	0	0	0	0	0	0	0	0	0	0	0	2	0	
	Meningitis	A	0	0	0	0	0	0	0	0	0	0	0	0	0	0	0	0	18	0	
		D	0	0	0	0	0	0	0	0	0	0	0	0	0	0	0	0	0	0	
	Unexplained Cluster of deaths	A	0	0	0	0	0	0	0	0	0	0	0	0	0	0	0	0	0	0	0
		D	0	0	0	0	0	0	0	0	0	0	0	0	0	0	0	0	0	0	0
Neglected Tropical Diseases	Buruli Ulcer	A	0	0	0	0	0	0	0	0	0	0	0	0	0	0	0	0	0	0	
		D	0	0	0	0	0	0	0	0	0	0	0	0	0	0	0	0	0	0	
	Yaws	A	0	0	0	0	0	0	0	0	0	0	0	0	0	0	0	0	36	0	
		D	0	0	0	0	0	0	0	0	0	0	0	0	0	0	0	0	0	0	
TOTAL			3	13	2	36	14	7	7	9	13	8	202	22	3	4	22	365	8290	8150	

D = Dead A = Alive

Notes

- 👉 **Completeness** refers to the proportion of expected weekly IDSR reports received (target: $\geq 80\%$)
- 👉 **Timeliness** refers to the proportion of expected weekly IDSR reports received by the next level on time (target: $\geq 80\%$). Time requirement for weekly IDSR reports:
 - Health facility - required on or before 5:00pm every Saturday to the district level
 - Health district - required on or before 5:00pm every Sunday to the county level
 - County - required on or before 5:00pm every Monday to the national level
- 👉 **Non-polio AFP rate** is the proportion of non-polio AFP cases per 100,000 among the estimated population under 15 years of age in 2017 (annual target: $\geq 2/100,000$)
- 👉 **Non-measles febrile rash illness rate** refers to the proportion of Negative measles cases per 100,000 population
- 👉 **Annualized maternal mortality rate** refers to the maternal mortality rate of a given period less than one year and it is the number of maternal deaths per 100,000 live births
- 👉 **Annualized neonatal mortality rate** refers to the neonatal mortality ratio of a given period less than one year and it is the number of neonatal deaths per 1,000 live births
- 👉 **Epi-linked** refers to any suspected case that has not had a specimen taken for serologic confirmation but is linked to a laboratory confirmed case
- 👉 **Confirmed case** refers to a case whose specimen has tested positive or reactive upon laboratory testing, or has been classified as confirmed by either epidemiologic linkage with a confirmed case, or clinical compatibility with the disease or condition

Epidemiological bulletin published with support from WHO and CDC

For comments or questions, please contact

Ralph W. Jetoh, MD, MPH

Director

Infectious Disease and Epidemiology Division
National Public Health Institute of Liberia
Republic of Liberia

Email: ralphica2000@gmail.com

Phone: +231 886526388/777372655

Website: www.nphil.gov.lr

National Public Health Institute of Liberia (NPHIL)

MISSION

To prevent and control public health threats by promoting healthy outcomes and serving as a source of knowledge

VISION

A center of excellence to create health outcomes for Liberians through a strong preventive health system and expertise

EDITORIAL TEAM

DIDE / NPHIL

A. N. Mianah
I. P. Pewu
T. O. Yeabah
J. S. Kokro
E. Dwalu
A.B. Corvah
G. B. Williams
S. K. Zayzay
L. W. Colee
M. Tegli
T. L. Hall
S. L. Flomo
M. S. Quiah
C. T. Yeah
L. K. Seepoe
J. O. Abel
P. J. Thomas
H. M. Sherman
M.D. Vaye
N. K. Dovillie
A. Coker
S. Nuwolo

**Ministry of Health
WHO Liberia Office**

Data sources

Data and information is provided by the fifteen County Surveillance Officers and National Public Health Reference Laboratory via regular weekly reports, telephone calls and email exchanges. Situations are evolving and dynamic therefore numbers stated are subject to change.